



PR-56A Ver 2.00
Country of origin: Russia

DATA SUMMARY

Organisation: Former Soviet Union.

Year of Introduction: 1956.

Purpose: Agents, possibly special forces.

Receiver:

Circuit features: RF, mixer, oscillator, IF stage (2x), detector/AF, AF output, BFO. AM R/T and CW.

Frequency coverage: 2-12 MHz in 4 ranges: 2-3.2MHz, 3.2-5MHz, 5-8MHz and 8-12MHz.

Valves: 1K1P (1K1П) 3x, 2P1P (2П1П) 2x, 1A1P (1A1П) 2x

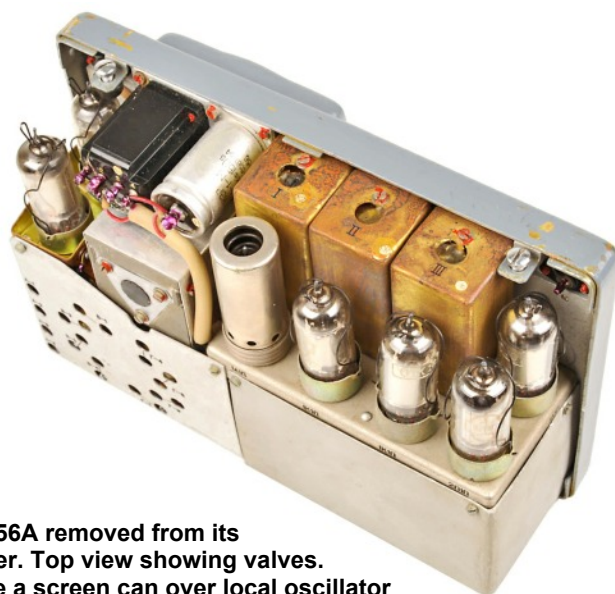
Power Supply: 80V HT, 1.5V LT, 1.5V lamp battery.

Size (cm): Height 8, length 13, width 20.

Accessories: TA-4 headphones, aerial lead.

REMARKS

The PR-56A (Russian ПР-56А) was a miniature dry battery powered short wave receiver. Used as a stand alone receiver fitted in a suitcase, it was also part of the Rion R-57 suitcase set (see Chapter 154). The receiver was principally designed for CW reception, has no AVC, and only an RF gain control.



PR-56A removed from its cover. Top view showing valves. Note a screen can over local oscillator valve in order to reduce unwanted radiation.

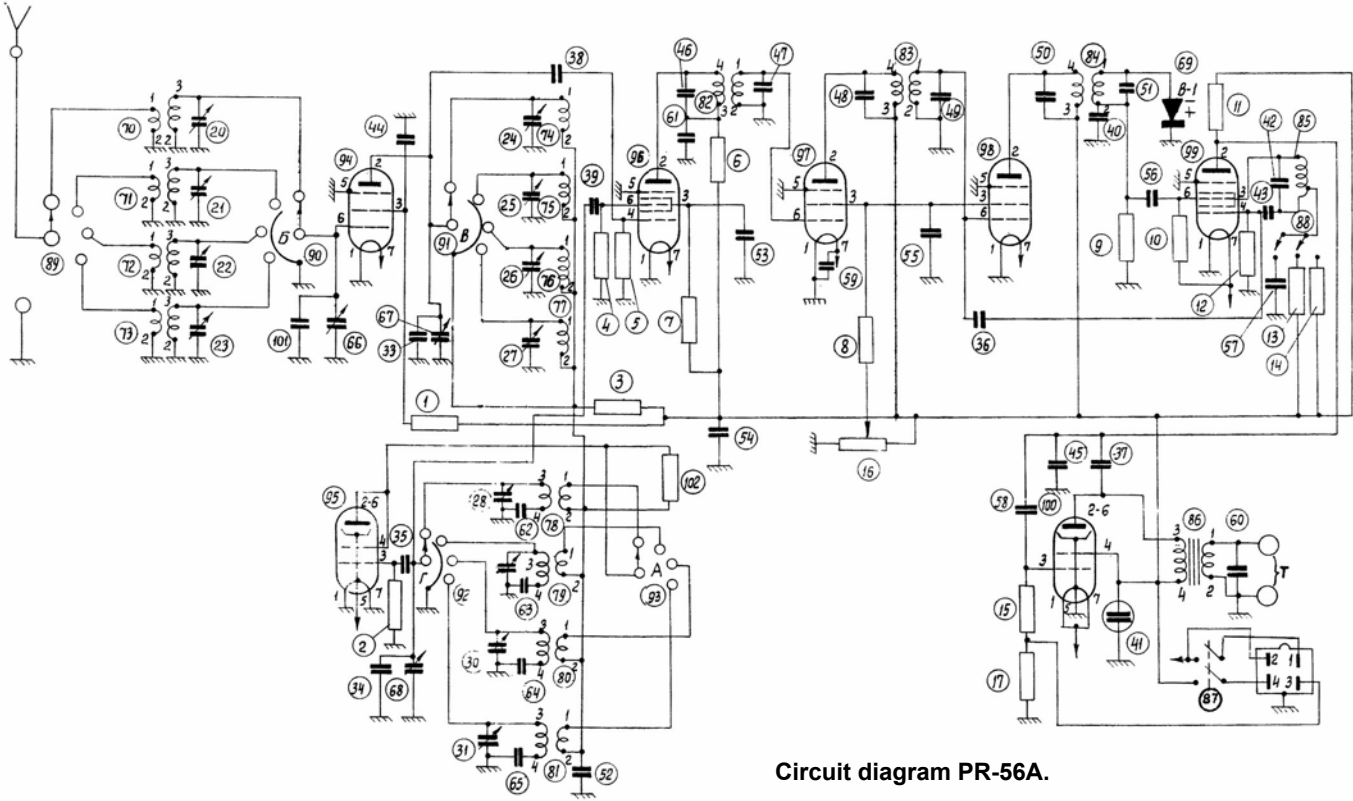


Detail view of frequency scales and tuning arrangements. Course tuning was done with the large black frequency scale which extends at both sides. The brown thumb wheel at the right was used for fine tuning.

References:

This chapter presents an abridged version derived from a comprehensive account of the PR-56A receiver available at www.cryptomuseum.com. The included photos were taken from a PR-56A held in the museum's collection, and information from the website has been published with the kind permission of the Crypto Museum in Eindhoven, Holland.

- In the second version of this chapter, photos of a suitcase were added, courtesy Reinhard in Germany.
- Photographs of a second PR-56 suitcase were provided by Ernő Kollár, HA5DB, from the Virtual Radio Museum (<https://radiomuseum.hu>), for which we extend our sincere thanks for granting permission to publish.



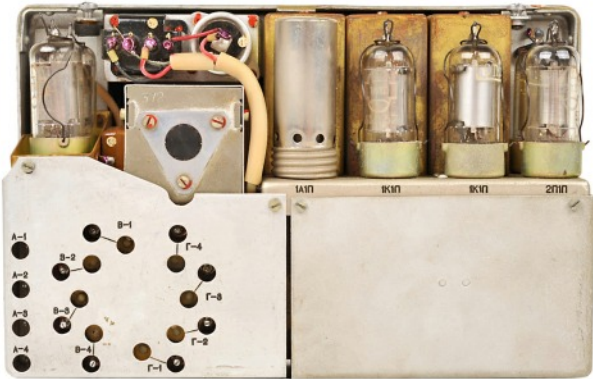
Circuit diagram PR-56A.



Front panel layout and functions of controls PR-56A.

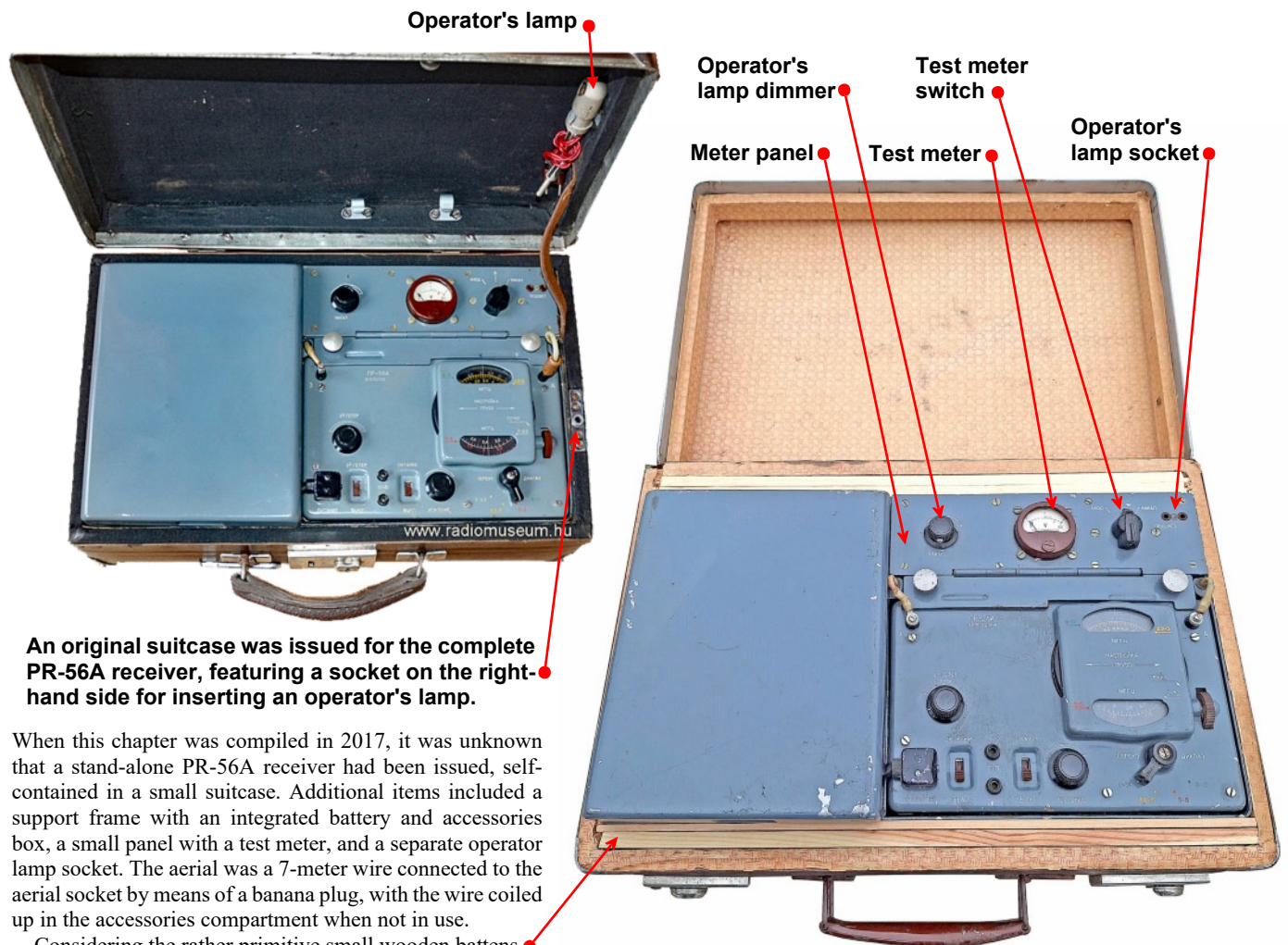


Receiver removed from its case.



PR-56A rear view showing RF unit left and other stages right.

Suitcase for PR-56A receiver.

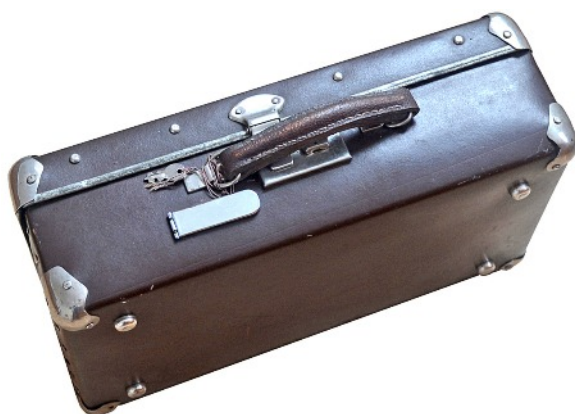


An original suitcase was issued for the complete PR-56A receiver, featuring a socket on the right-hand side for inserting an operator's lamp.

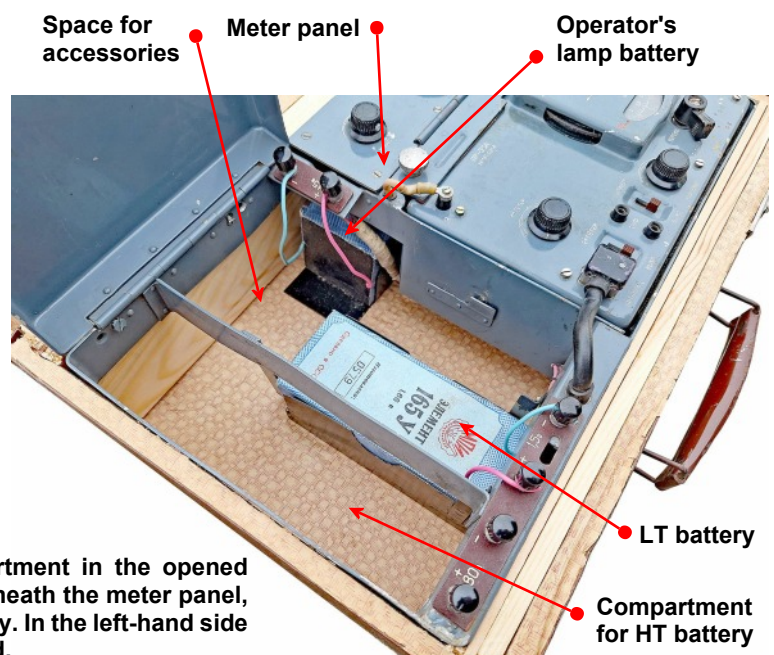
When this chapter was compiled in 2017, it was unknown that a stand-alone PR-56A receiver had been issued, self-contained in a small suitcase. Additional items included a support frame with an integrated battery and accessories box, a small panel with a test meter, and a separate operator lamp socket. The aerial was a 7-meter wire connected to the aerial socket by means of a banana plug, with the wire coiled up in the accessories compartment when not in use.

Considering the rather primitive small wooden batten attached to the top and bottom inside the suitcase, filling the space, one may have serious doubts about the authenticity of the suitcase found earlier. See the photos of a genuine suitcase, which became available much later and were added just in time before publishing the v2.00 update.

The suitcase was opened, revealing the battery/accessories compartment on the left, the PR-56A receiver at the bottom right, and a panel with operator light dimmer, meter, meter switch, and operator lamp socket.



In this photo is shown an authentic suitcase in which a PR-56A receiver was transported.



View of the battery and accessories compartment in the opened position. It reveals a 1.5V filament battery. Beneath the meter panel, there was a separate 1.5V operator lamp battery. In the left-hand side compartment, the 80V HT battery was installed.